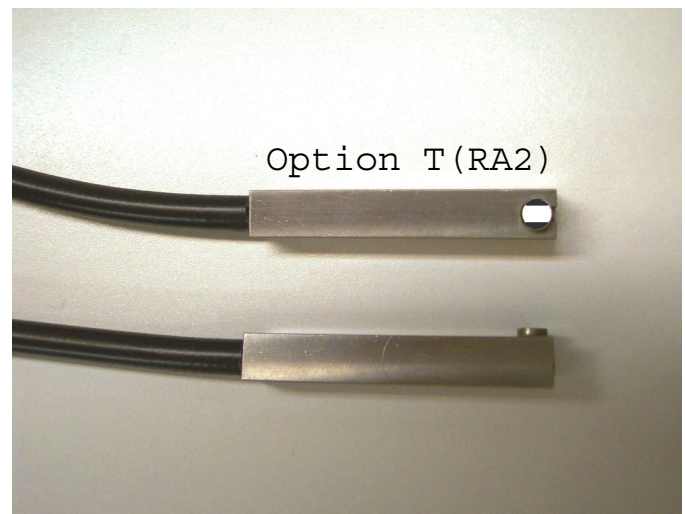
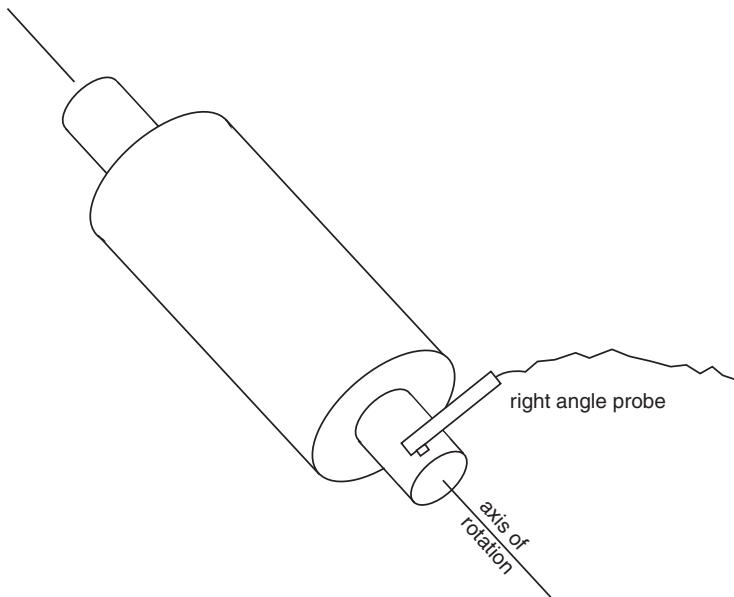


April 2003

## Model RC63-EH3T(RA2)

### Problem

A customer had to measure the runout of a high speed shaft. The problem was limited accessibility to the shaft. A very short tip right angle probe was needed to solve the problem.



### Solution

- Philtec's model RC63 with Option T(RA2) right angle tip was chosen to solve the tight space problem. With a tip size of 0.375" and an operating gap of 0.05", **this sensor turns 90° and fits within a space of 7/16" (11 mm).**
- Option E was added to provide 10 Ft long sensor cables
- Option H3 was added to provide 350 KHz sensor frequency response

